

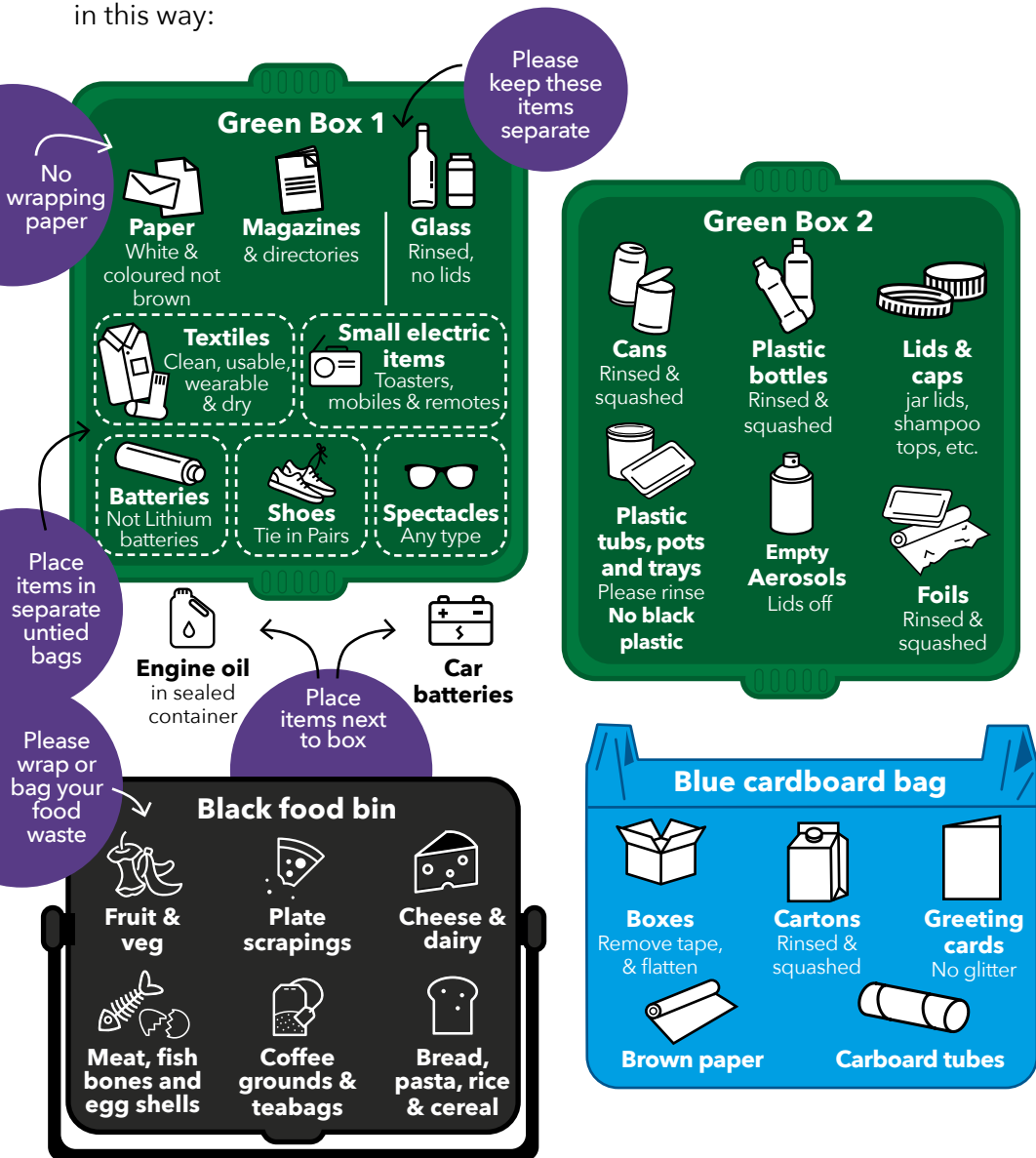
Top tips for sorting your recycling

Washing, squashing, and sorting the materials inside your green boxes helps crews collect quickly, keeps the vehicle moving, and reduces traffic congestion. It also prevents contamination and ensures high quality recycling.

Check you are recycling all you can at:

www.bathnes.gov.uk/recyclemore

We recommend you have 2 boxes if you have space, to sort materials in this way:



Food Waste

Food waste is a major contributor to greenhouse gas emissions. It is responsible for over 36 million tonnes of emissions in the UK. On average a third of a bag of rubbish is waste food, this can cost families around £60 per month.

There are lots of top tips to help you reduce the amount of food you waste, the best place to start is at

Our top 5 tips:

1. Write a shopping list - and stick to it!
2. Use your freezer (you can freeze almost everything)
3. Measure or use portion control
4. Know your date labels - Use by is the only one you need to stick to
5. Use your leftovers (lots of recipes out there)

Anything left can be home composted or recycled.

Our food waste is sent to Codford Biogas in Wiltshire. They use anaerobic digestion (controlled composting) to breakdown the food waste in a large tank to make a compost slurry for use on surrounding

farmland and they generate electricity.

You can use newspaper or any carrier bag to line your caddy.

BUT PLEASE DO NOT USE BAGS FOR LIFE

Proud to support

**LOVE
FOOD**
hate waste



Christmas and New Year recycling and rubbish collection changes 2022-23

Thank you for all you have recycled this year.

My collection day should be		Revised collection day	
Monday	26/12/2022	Wednesday	28/12/2022
Tuesday	27/12/2022	Thursday	29/12/2022
Wednesday	28/12/2022	Friday	30/12/2022
Thursday	29/12/2022	Saturday	31/12/2022
Friday	30/12/2022	Monday	02/01/2023
Monday	02/01/2023	Tuesday	03/01/2023
Tuesday	03/01/2023	Wednesday	04/01/2023
Wednesday	04/01/2023	Thursday	05/01/2023
Thursday	05/01/2023	Friday	06/01/2023
Friday	06/01/2023	Saturday	07/01/2023

Please remember we stop collecting Garden Waste from Monday 5th December until Sunday 15th January. Garden waste can be brought to our recycling centres throughout the period except for the dates below:

Recycling Centres are closed on these days:

Christmas Day Sunday 25 December

Boxing Day Monday 26 December

New Years Day Sunday 1 January

Recycling Centres will be open for all other days

You can download our collection calendar with the revised dates for your home from our collection day finder at www.bathnes.gov.uk/collectionday





Christmas trees

Dorothy House are again offering a Christmas tree collection to residents living in BA1, BA2, BA3 & BS31 postcodes for a small donation to their Charity.

Visit: www.just-helping.org.uk/register-tree to register your tree for collection.

Garden waste collections re-start from Monday 16 January 2023.

Don't forget to **book a collection** at www.bathnes.gov.uk/gardenwaste if you would like your Christmas Tree or Garden Waste sacks collected.

Please make sure all decorations are removed and the tree is cut in half (to less than 1.2m tall).

You can also take your Christmas tree to one of our Recycling Centres for composting.

Remember to recycle this Christmas - Let's get it right!

As well as sorting your boxes, it is also important to only put in what we can collect (and not what you hope we can recycle). Our crews may not empty it if they have to spend too much time taking out what cannot be recycled. If you are in doubt about what you should put out, please check our website.

Please leave out:

- X** Wrapping paper
- X** Soft plastics (such as bags and cling film)
- X** Drinking glasses
- X** Clothes hangers

For more tips to help you reduce your waste please visit our facebook page at


www.facebook.com/recycleforbathnes

Bad Weather

Updates - Should there be any disruptive weather, please check for collection problems at www.bathnes.gov.uk/collectionproblems or on facebook or the Council's twitter @bathnes

WORRIED ABOUT THE COST OF LIVING? HELP IS OUT THERE

Contact the Community Wellbeing Hub

 **0300 247 0050** Monday to Friday from 9am until 5pm
Alternatively, you can contact us by text: **07870 868368**

— Closed on Christmas and New Year bank holidays

 **BATHNES.thehub@hcrpgcaregroup.com**

 **communitywellbeinghub.co.uk**



www.bathnes.gov.uk/costofliving



Bath & North East
Somerset Council
Improving People's Lives

Warm spaces directory



Providing spaces with
respect, dignity and warmth

Find a warm, inclusive and welcoming place in
Bath and North East Somerset



www.bathnes.gov.uk/warmspaces

Bath & North East
Somerset Council

Improving People's Lives


Bath & North East Somerset

Information, support and signposting